

2023

2024

# xixi

ORAL & BOTANICAL



**IT WAS NOT A DREAM**

BRINGING THE JOY AND  
CALM OF NATURE INTO  
YOUR SPACE





Zizi Celik - Founder & Designer

---



## ***From Fleeting Blossoms to Lasting Art***

A Botanical Journey of Timeless, Minimal, Nature-inspired Prints

Welcome to my world—a slow and soulful studio based in Utrecht, where nature, art, and emotion intertwine.

As a former florist turned botanical printmaker, my love for flowers has always been at the heart of what I do. Over time, I felt a deep calling to work more sustainably, to listen more closely to nature's rhythms, and to create with intention and meaning. What began as fleeting bouquets has grown into lasting works of art—delicate yet timeless impressions of the natural world.

This catalog brings together a curated collection of botanical prints created through a process that honors both craftsmanship and the quiet wisdom of nature. Each piece is an invitation to slow down, breathe deeply, and reconnect—with yourself, with your space, and with the natural beauty that surrounds us.

I hope these pieces bring a sense of peace, beauty, and rootedness to your home. May they serve as gentle reminders to find wonder in the small things and to cherish the fleeting—by turning it into something lasting.

With petals and prints,

A handwritten signature in black ink, reading "Zizi".







# Iced Blue Florals

A crimson red Oriental Poppy picked along the roadside, the delicate trembling of Quaking-grass I encountered for the very first time, a uniquely laced Japanese Maple 'Crimson Queen' spotted during my daily walks, and the quietly charming Wood Aven's gathered from the forest—all came together to inspire this floral artwork. Each element was chosen with care, rooted in a moment of connection with nature.

The color palette draws from the ethereal hues of Swiss glaciers—Rhône, Moiry, and Aletsch—whose blues are at once timeless, calming, and deeply evocative. These shades offer a gentle presence, perfect for thoughtful interiors. In a workspace, they encourage clarity and quiet focus; in a living room or bedroom, Iced Blue Florals bring a serene elegance, transforming the space into a restful haven filled with subtle beauty.











TO BRING THE CALM AND  
JOY OF NATURE TO YOUR  
SPACE.





CLASPED PONDWEED  
*POTAMOGETON PERFOLIATUS*



# Waterweed Collection

I spent some of the most wonderful years of my life by a lakeside. There's nothing quite like stepping out for a walk and watching every shade of green unfold into one of the most picturesque scenes, with the mountains standing quietly in the background. A gentle breeze in your hair, swans gliding gracefully, birds performing their daily dance—it often felt like nature had staged a private show just for me. Life by the lake felt like a never-ending holiday—and honestly, who wouldn't want that?

The waterweeds featured in this collection were gathered from that very lake—a place deeply rooted in my memories. Each print was thoughtfully composed, with carefully chosen backgrounds to highlight the form and subtle color of these aquatic plants.

Green is a grounding color, deeply connected to nature and renewal. The Waterweed Collection brings this calming presence indoors, while also offering a touch of vibrancy and quiet drama. These pieces make a refreshing statement in workspaces, hallways, or bathrooms—anywhere you'd like to invite a sense of stillness and natural beauty.

---

“Green, the color of life, renewal, nature, and energy, is associated with meanings of growth, harmony, freshness, safety, fertility, and environment. The color green has healing power and is understood to be the most restful and relaxing color for the human eye to view.”

---









## All things natural

One of the most beautiful Japanese maples, *Aconitifolium*, caught my eye on a serene autumn day. Its deeply cut, fern-like foliage glowed in shifting tones of red, orange, and yellow—a quiet spectacle of the season. I took my time to admire its delicate beauty, then gathered a small basket of fallen leaves to preserve their fleeting charm through hand-printed botanical artworks.

The color palette for this set is rooted in nature, featuring soft tones of cream, greyish white, and Persian grey. The minimalist design allows the organic shapes of the foliage to stand out, creating a sense of balance and calm. When paired with natural textures and materials, these prints add warmth and quiet elegance to any interior.

The bedroom, a place for rest and renewal, is the perfect setting for this Japanese maple collection. With its soothing tones and gentle forms, the artwork helps create a peaceful, nurturing atmosphere—an invitation to take a deep breath, unwind, and simply be.



---

"Study nature, love nature, stay close to nature. It will never fail you."

—Frank Lloyd Wright

---

## Botanical Blues

Botanical Blues is a collection of unique botanical art prints in a deep, shaded blue palette. Each piece is handprinted using Red Emperor Japanese Maple branches, capturing their delicate structure and quiet elegance. These prints bring a sense of calm and timeless beauty to any space—whether displayed in an office, living room, or bedroom.

Our mission is to honor the quiet wonder of nature—transforming a simple flower or leaf into a piece of art that invites stillness and reflection. There's something truly magical about preserving what is often overlooked and turning it into something lasting and meaningful.

Inspired by the endless beauty found in the natural world, this collection seeks to bring that sense of serenity indoors. Through these prints, we hope to share the joy and grounding presence of nature—and to inspire a life more connected to it.



*briza minor*

iced-blue



# Deep Lake Green Botanicals

Nothing compares to swimming in an ice-cold, crystal-clear lake with the sun shining above. I didn't always know this—having grown up by the sea, lakes felt unfamiliar to me. But that changed the first time I swam in a Swiss lake. It was after a long, challenging hike through the mountains on a hot summer day. I remember the exact moment I jumped in—how the icy water wrapped around me, washing away every trace of fatigue. It was incredibly soothing, almost otherworldly. There's truly nothing like it.

The colors in this pair of botanical prints are inspired by the stunning green hues of Switzerland's many lakes. Each piece is handprinted using the delicate and distinctive Japanese Maple 'Full Moon', chosen for its graceful, significant leaves and calming presence.

Green is a remarkable color for interiors. It brings a deep sense of harmony, connectedness to nature, and a quiet richness that feels both grounding and abundant. Adding this set to your space offers more than just decoration—it creates a peaceful atmosphere while making a bold, natural statement.











---

Personal, calming, and timeless, these lasting art prints offer a sense of connectedness to nature. They bring joy and tranquility to any space—whether it's your home, workspace, or a home away from home.

---

Botanical art prints that are personal, calming, timeless, and lasting—each one designed to foster a deep sense of connection to nature. These prints bring a quiet beauty and serenity to any space, whether it's your home, workspace, or a home away from home.

Every piece in this collection is hand-printed using fresh flowers, foliage, and plants carefully gathered from nature. These impressions are then transformed into premium-quality art prints. Each design is produced as a limited edition of no more than 24/48 prints, individually numbered and hand-signed by the artist.

We value not only aesthetics, but also exceptional quality in both materials and craftsmanship. All prints are produced using high-quality giclée printing on Hahnemühle German Etching paper—a beautifully textured, museum-grade paper that brings out the finest details and tones in every piece.







# Under the Maple Tree

Have you ever sat beneath a tree and gazed up at its branches and leaves? Numerous studies have shown that spending time around trees—and even just looking at their branches and foliage—can reduce stress, lower blood pressure, and elevate mood.

As a botanical designer, my mission is to capture the fleeting beauty of flowers and foliage on paper, giving them a lasting presence through art. When creating this set of prints, I was inspired by the peaceful feeling you get when sitting quietly under a tree—grounded, calm, and present.

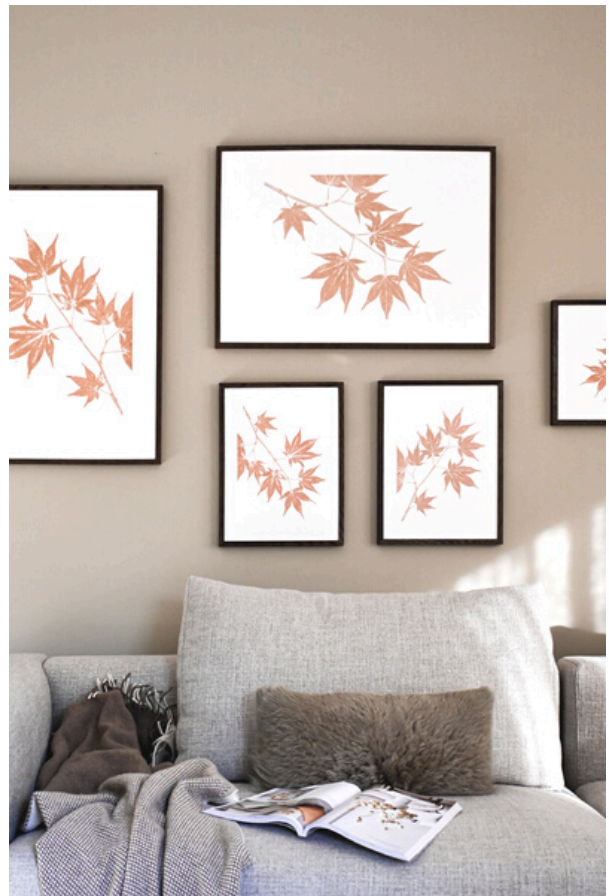
**Under the Maple Tree** was handprinted using branches from the Red Emperor Japanese Maple. By arranging different branch sizes in both vertical and horizontal compositions, this series evokes the tranquil sensation of being sheltered beneath a canopy of leaves.

The soft, grayish-peach tones add warmth and freshness to any space. These prints bring light and subtle elegance to your living room, kitchen, or dining area—and add a gentle, sophisticated touch to the bedroom.

---

The grayish peach color would give light, warm and always a fresh look to any space. They will look amazing in your living room, in your kitchen, dining room and also will give soft and sophisticated look to your bedroom

---







---

Artwork belongs in the kitchen just as much as in any other space. Add a fresh and joyful touch to your kitchen walls with these Woodland Strawberry and Himalayan Blackberry botanical art prints.

---

## Woodland strawberry & Himalayan blackberry

Where I grew up, you could wander freely through the countryside without fear of getting lost or feeling unsafe. It was a wonderfully unrestrained way to grow up. My childhood home sat on a modest mountain, surrounded by farms and golden wheat fields. When summer came, wild strawberries and blackberries grew nearby, ripe for picking. My grandmother would turn the berries I collected into the most delicious jam. I often think about how lucky I was to have a childhood so deeply rooted in nature and its abundance—and for a moment, while picking berries in Switzerland, those precious memories came rushing back.

In today's modern homes, the kitchen has become the true heart of the house. It's where we gather, nourish, and connect—so why not give its walls the same attention as any other space? Thoughtful artwork can bring warmth, personality, and just the right mood.

**Woodland Strawberry** is handprinted using wild strawberries in a soft blush pink, while **Himalayan Blackberry** features pale mint green tones. These prints can be displayed individually or as a pair, and their subtle, refreshing colors bring a cheerful, natural charm to any kitchen space.





HIMALAYAN BLACKBERRY  
RUBUS ULMIFOLIUS





MEADOW 'TRINITY ISLANDS  
GREEN'



MEADOW 'TRINITY ISLANDS  
GREEN'

---

"Capturing the true beauty of a flower or leaf on paper brings me joy, calm, and a deep sense of fulfillment. There's something magical about transforming something so simple—often overlooked—into a piece of art that soothes and inspires. All my collections are a reflection of the endless beauty nature offers us. Through these works, my hope is to bring the serenity and joy of the natural world into your space—and to inspire a life lived in closer connection with nature."

—Zizi

---





TIMELESS. MINIMAL.  
NATURE-INSPIRED PRINTS

# 'It was not a dream' Collection

Limited edition art prints.

Print quality: Giclee print | Paper quality: 310 g Hahnemühle Textured German Etching paper

Only limited to 24 editions in small sizes 12 editions in large sizes.

All hand-signed and numbered by the artist.

Locally produced in the Netherlands.



**Briza minor 'iced blue'**  
50x70 cm  
30x40 cm



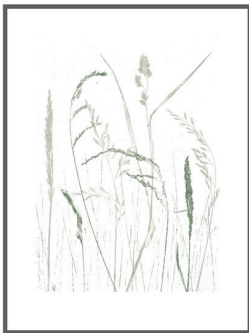
**Wood avens 'iced blue'**  
30x40 cm



**Oriental poppy 'iced blue'**  
30x40 cm



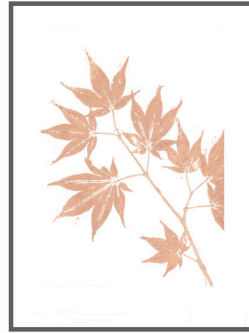
**Crimson Queen maple 'iced blue'**  
50x70 cm  
30x40 cm



**Meadow 'Trinity Island green'**  
90x120 cm  
50x70 cm  
30x40 cm



**Red emperor Japanese maple I 'peach'**  
50x70 cm  
30x40 cm



**Red emperor Japanese maple II 'peach'**  
50x70 cm  
30x40 cm



**Maiden's tears 'ginger'**  
30x40 cm



**Red emperor Japanese maple III 'Prussian blue'**  
50x70 cm  
30x40 cm



**Red emperor Japanese maple IV 'Prussian blue'**  
50x70 cm  
30x40 cm



**Full moon Japanese maple I 'lake green'**  
50x70 cm  
30x40 cm



**Full moon Japanese maple II 'lake green'**  
50x70 cm  
30x40 cm





**Edelweiss 'cream-fresh olive'**  
30x40 cm  
21x30 cm



**Himalayan blackberry 'pale mint green'**  
50x70 cm  
30x40 cm



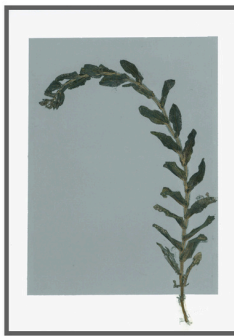
**Woodland strawberry 'blush pink'**  
30x40 cm  
21x30 cm



**Waterweed III 'pale grey green'**  
30x40 cm



**Waterweed II 'dark green'**  
30x40 cm



**Waterweed I 'pale grey green'**  
30x40 cm



**Amur maple III 'cream'**  
40x50 cm



**Amur maple II 'white grey'**  
40x50 cm



**Amur maple I 'Persian grey'**  
40x50 cm

# 'Look into nature' Collection

Limited edition art prints.

Print quality: Giclee print | Paper quality: 310 g Hahnemühle Textured German Etching paper

Only limited to 24 editions in small sizes 12 editions in large sizes.

All hand-signed and numbered by the artist.

Locally produced in the Netherlands.



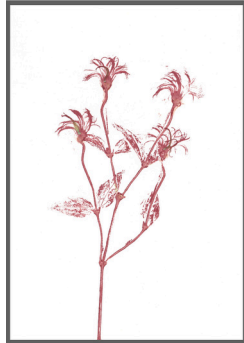
**Northern sea oats 'roso'**

70x100 cm  
50x70 cm  
30x40 cm  
21x30 cm



**Icelandic poppy II 'pale orange'**

50x70 cm  
30x40 cm  
21x30 cm



**Hairy Clematis 'deep red'**

30x40 cm  
21x30 cm



**Silver grass 'yellow ochre'**

30x40 cm



**Red columbine 'roso'**

30x40 cm



**Rose petals I 'earth'**

30x40 cm



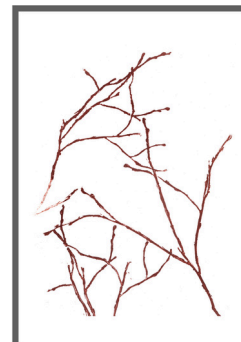
**Rose petals II 'earth'**

50x70 cm  
30x40 cm



**Rose petals III 'earth'**

30x40 cm



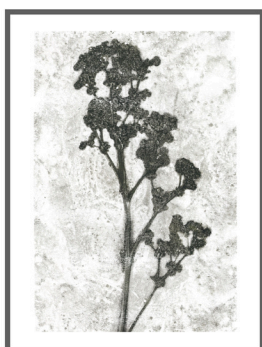
**Blueberry I 'earth brown'**

50x70 cm  
30x40 cm



**Blueberry II 'earth brown'**

30x40 cm



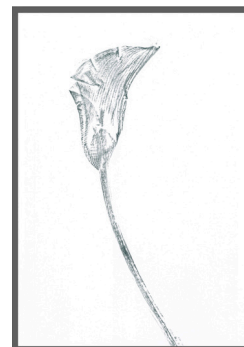
**Lady's mantle 'petrel grey'**

70x100 cm - 12 editions  
50x70 cm - 12 editions  
30x40 cm - 48 editions  
21x30 cm - 48 editions



**Juneberry 'soft pink'**

70x100 cm  
50x70 cm  
30x40 cm  
21x30 cm



**Calla lily 'dove grey'**

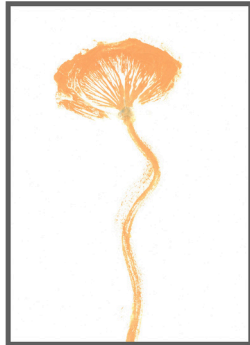
30x40 cm





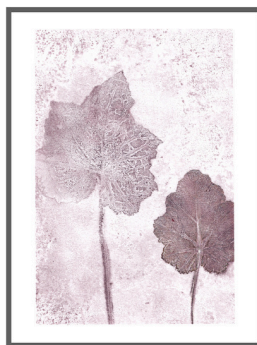
**Peony 'loganberry - yellow ochre'**

50x70 cm  
30x40 cm  
21x30 cm



**Icelandic poppy 'pale orange'**

30x40 cm  
21x30 cm



**Alumroot 'loganberry'**

70x100 cm - 12 editions  
50x70 cm - 12 editions  
30x40 cm - 48 editions  
21x30 cm - 48 editions



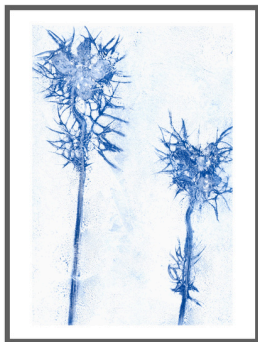
**Maple II 'yellow ochre - loganberry'**

30x40 cm  
21x30 cm



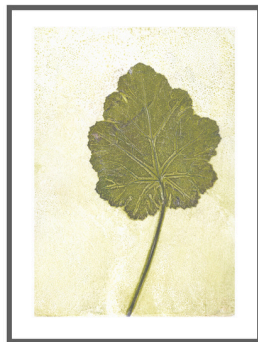
**Maple I 'loganberry'**

30x40 cm



**Love-in-a-mist 'electric blue'**

70x100 cm - 12 editions  
50x70 cm - 12 editions  
30x40 cm - 48 editions  
21x30 cm - 48 editions



**Geranium 'yellow green'**

30x40 cm - 48 editions



**Herb garden I 'pea green'**

50x70 cm  
30x40 cm  
21x30 cm



**Herb garden II 'pea green'**

50x70 cm  
30x40 cm  
21x30 cm

# 'Heaven is under our feet' Collection

Limited edition art prints.

Print quality: Giclee print | Paper quality: 310 g Hahnemühle Textured German Etching paper

Only limited to 48 editions in small sizes and 24 in large sizes.

All hand-signed and numbered by the artist.

Locally produced in the Netherlands.



**Fern 'grey green'**

50x70 cm  
30x40 cm  
21x30 cm



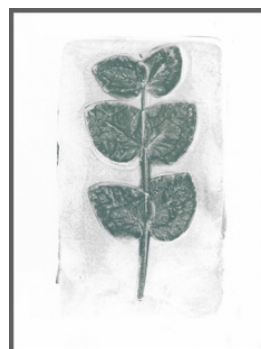
**Eucalyptus I 'grey green'**

50x70 cm  
30x40 cm  
21x30 cm



**Eucalyptus II 'grey green'**

30x40 cm  
21x30 cm



**Eucalyptus III 'grey green'**

30x40 cm



**Ranunculus 'grey green'**

50x70 cm  
30x40 cm  
21x30 cm



**Pasque flower I 'ginger'**

30x40 cm



**Pasque flower II 'ochre'**

50x70 cm  
30x40 cm  
21x30 cm



**Pasque flower II 'ochre'**

50x70 cm  
30x40 cm  
21x30 cm



**Clematis I 'mild terracotta'**

50x70 cm  
30x40 cm



**Clematis II 'mild terracotta'**

30x40 cm



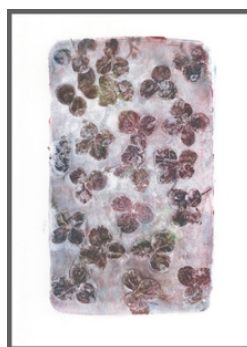
**Astrantia I 'mild green - loganberry'**

30x40 cm



**Astrantia II 'yellow ochre - loganberry'**

30x40 cm



**Hydrangea petals I 'damson purple'**

30x40 cm



**Hydrangea petals II 'loganberry'**

30x40 cm





**Anemone 'soft pink'**  
50x70 cm  
30x40 cm  
21x30 cm



**Snowdrops I 'grey lavender'**  
50x70 cm  
30x40 cm  
21x30 cm



**Hellebores I 'damson purple'**  
30x40 cm  
21x30 cm



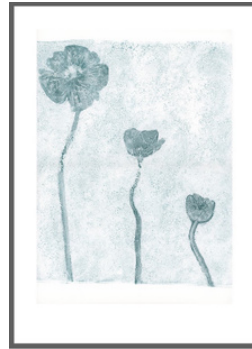
**Snowdrops II 'grey lavender'**  
30x40 cm  
21x30 cm



**Hellebores II 'damson purple'**  
30x40 cm



**Fritillaria 'indigo'**  
50x70 cm  
30x40 cm



**Poppies 'sea green'**  
30x40 cm

# 'There are always flowers' Collection

Limited edition art prints.

Print quality: Giclee print | Paper quality: Hahnemühle Textured German Etching paper

Only limited to 48 editions in small size.

All hand-signed and numbered by the artist.

Locally produced in the Netherlands.



**Gloriosa II 'mild green'**  
30x40 cm



**Gloriosa IIN 'scarlet'**  
30x40 cm



**Gloriosa I 'ultramarine'**  
30x40 cm



**Gloriosa round 'scarlet'**  
30x40 cm



**Hydrangea 'mild green'**  
30x40 cm



**Amaryllis 'blue'**  
30x40 cm



**Amaryllis 'bright orange'**  
30x40 cm



**Chamomile 'mixed'**  
30x40 cm



# Notebooks - A5 size

Offset print, printed on 300gsm cover recycled and eco-friendly paper  
90 gsm ruled inside 48 pages of recycled and eco-friendly paper  
Staple-bound - No plastic 100% paper - Fountain pen friendly.  
Designed in Switzerland. Printed in Italy.



# Notepads - 100x195 mm in size

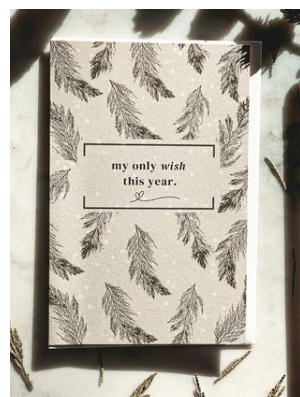
Same specifications as notebooks + Lined. Glued bound.



# Winter Wonderland Cards - 230x178 mm in size

Offset print, printed on 270 g recycled paper, includes an envelope.

Designed in the Netherlands. Printed in Italy. Contains no plastic, only paper.





## Art Cards - A5 size

Offset print, printed on 270 g matte paper, includes an envelope. Single sided. Blank. Locally produced in Switzerland. Contains no plastic, only paper.



## Greeting Cards - A6 size

Offset print, printed on 270 g matte paper, includes an envelope. Folded. Blank inside. Locally produced in Switzerland. Contains no plastic, only paper.





# Xixi

FLORAL & BOTANICAL



BRINGING THE JOY AND  
CALM OF NATURE INTO  
YOUR SPACE





**XiXi**

FLORAL & BOTANICAL

[xixifloralprints@gmail.com](mailto:xixifloralprints@gmail.com)

[www.xixifloralprints.com](http://www.xixifloralprints.com)