

2021
2022

xixi

FLORAL & BOTANICAL



LOOK INTO NATURE

BRINGING THE JOY AND
CALM OF NATURE INTO
YOUR HOME





Look into nature...

The vivid memories of my childhood are mostly connected to nature. I loved living in the countryside. Nature was my playground. Now, whenever I am in nature it doesn't only bring me joy and calm but I also feel connected to my childhood memories.

Since I moved to Switzerland in September 2019, this feeling of connectedness grew even bigger. Nature gave me endless inspiration in my work and made me feel safe in this last year of continuous uncertainties.

When I pick flowers and branches on my walks to arrange them in a vase at home, I love watching them over time to witness their ever-changing beauty. A closed bud would open up slowly turning into a beautiful full blooming flower in a day or two. Their beauty would flee very quickly though. The petals would fall down and those beautiful standing stems would wilt eventually.

That's why I wanted to turn their fleeting beauty into something more lasting and personal. Capturing the true beauty of a flower on paper brings me joy, calm and deep fulfillment. It is so magical to turn something so simple and overlooked into a calming piece of art.

I hope you will find the pieces that would suit your interior and those pieces would bring the joy and calm of nature to your space.

With warmth and petals,

Zizi



Terracotta Sunset

In the past, when someone asked me where I would wish to live, all I could answer was 'somewhere where I could enjoy sunsets'. So when I moved to Zug, Switzerland, my wish came true.

Zug's sunsets are regarded as some of the most beautiful ones anyone could see in the world. The sun always sets on the opposite side of the lake, causing the lake and the sky to turn various colors of the rainbow.

This beautiful phenomenon of nature inspired me in my color palette. With great joy, I created artwork in pale shades of orange, red, and yellow using poppies, northern sea oats, red Columbine, Clematis, and silver grass.









La vie en rose

These days, with things being difficult, we can bring warmth and comfort by creating a nature touched pretty space with botanical art prints in shades and hues of pink and grey. Don't be put off with the idea of having pink in your interior. When you mix soft pink with white or shades of gray you would get a fresh but always chic result.

A beautiful early spring blossoming branch, Juneberry that I picked on one of my walks turned into a beautiful art print in soft pink. A few shades of grey here and there... The natural juices stained in the artwork adds an amazing depth to the piece.



Personal, calming, timeless, and lasting art prints give a sense of connectedness to nature and bring joy and calm to any space, whether home, workspace or a home away.

Botanical art prints that are personal, calming, timeless, and lasting. They would give a sense of connectedness to nature and bring calm to any space, whether home, workspace or a home away.

All our original designs are hand-printed in Switzerland using fresh flowers and foliage. Later, they are transformed into high-quality art prints. Each design is available only as a limited edition. They are all numbered and hand signed by the artist.

We value quality in material and production besides aesthetic appeals. Each art print is printed on high-quality "Hahnemühle" textured German Etching paper with high-quality (giclee quality) printing techniques.



Abstract Botanicals

Look into nature closely. You will be amazed by all the shapes and patterns you will discover. As a botanical designer, my mission is to capture the fleeting beauty of flowers and foliage on paper and give them a lasting life in the form of artwork.

Every flower is beautiful yet different. Some flowers are very delicate, some are light and some are airy whereas some are rough, hard, and prickly. That is why printing with them offers a new experience each and every time.

Creating the "Abstract Botanicals" I used rose petals and blueberry branches. The earth-toned geometrical art prints will add vitality and intrigue to any space. So they would be perfect to try on workspaces, hallways, and kitchens.

The earth-toned geometrical abstract botanical art prints will add vitality and intrigue to any space. So they would be perfect to try on workspaces, hallways, and kitchens.





Artwork belongs to the kitchen as much as it does to any space. Bring a fresh and joyful look to your kitchen walls with these Herb Garden art prints.

Herb Garden

Bring the charm of vintage herbal posters to your kitchen with these modern interpretations. We often reflect our personality on walls in the living room, dining room, or bedroom by hanging artwork. However, we tend to forget to enjoy art in the kitchen.

Artwork belongs to the kitchen as much as it does to any space. In our modern lives, the kitchen tends to be the heart of our home and it deserves equal consideration when it comes to styling the walls to bring personality and the right mood.

Herb Garden art prints are great to hang on walls in pairs. They are in beautiful 'pea green' color, which will bring a fresh and joyful look to your kitchen.







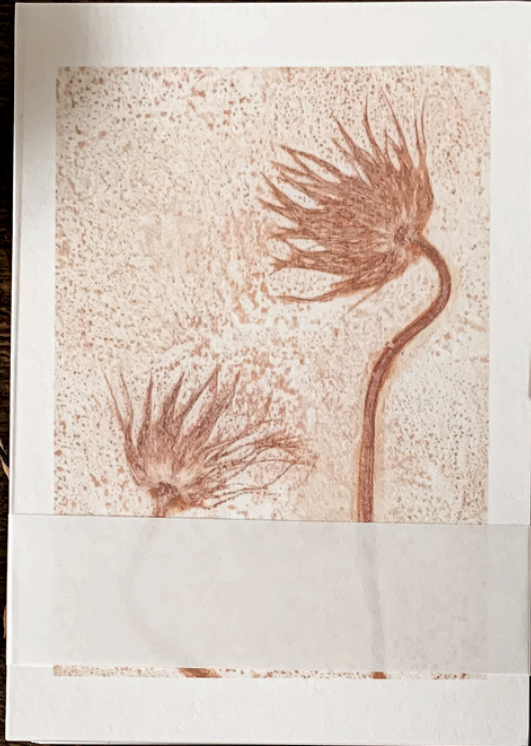
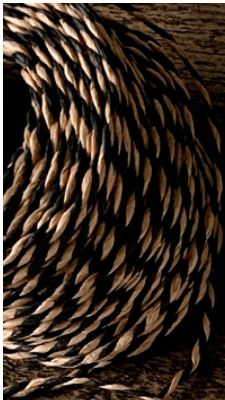
"If you truly love nature, you will find beauty everywhere."

— Laura Ingalls Wilder

Twilight Hues

A color palette inspired by the beautiful shades and hues of sunrise — loganberry, yellow ochre, and pale orange. I worked with beautiful peonies, poppies, maple, and Alumroot to create the prints in "Twilight Hues"

By gathering them together in various sizes you would immediately bring nature to your interior and create a warm, welcoming, and harmonious space.



Art Cards - A5 size

Offset print, printed on 270 g matte paper, includes an envelope
Locally produced in Switzerland. Contains no plastic, only paper.



Greeting Cards - A6 size

Offset print, printed on 270 g matte paper, includes an envelope
Locally produced in Switzerland. Contains no plastic, only paper.



'Look into nature' Collection

Limited edition art prints.

Print quality: Giclee print | Paper quality: 310 g Hahnemühle Textured German Etching paper

Only limited to 24 editions in small sizes 12 editions in large sizes.

(*except for Alumroot, love-in-a-mist, lady's mantle, and Geranium)

All hand-signed and numbered by the artist.



Northern sea oats 'roso'

70x100 cm
50x70 cm
30x40 cm
21x30 cm



Icelandic poppy II 'pale orange'

50x70 cm
30x40 cm
21x30 cm



Hairy Clematis 'deep red'

30x40 cm
21x30 cm



Silver grass 'yellow ochre'

30x40 cm



Red columbine 'roso'

30x40 cm



Rose petals I 'earth'

30x40 cm



Rose petals II 'earth'

50x70 cm
30x40 cm



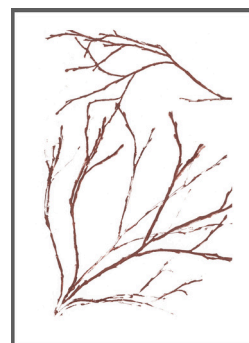
Rose petals III 'earth'

30x40 cm



Blueberry I 'earth brown'

50x70 cm
30x40 cm



Blueberry II 'earth brown'

30x40 cm



Lady's mantle 'petrel grey'

70x100 cm - 12 editions
50x70 cm - 12 editions
30x40 cm - 48 editions
21x30 cm - 48 editions



Juneberry 'soft pink'

70x100 cm
50x70 cm
30x40 cm
21x30 cm



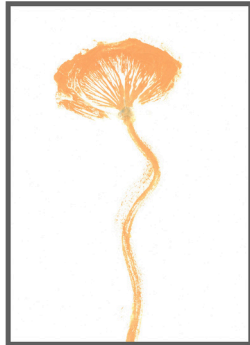
Calla lily 'dove grey'

30x40 cm



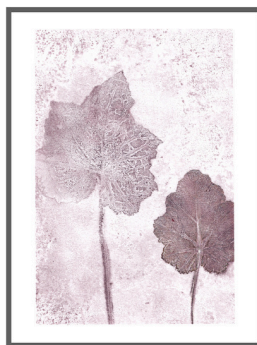
Peony 'loganberry - yellow ochre'

50x70 cm
30x40 cm
21x30 cm



Icelandic poppy 'pale orange'

30x40 cm
21x30 cm



Alumroot 'loganberry'

70x100 cm - 12 editions
50x70 cm - 12 editions
30x40 cm - 48 editions
21x30 cm - 48 editions



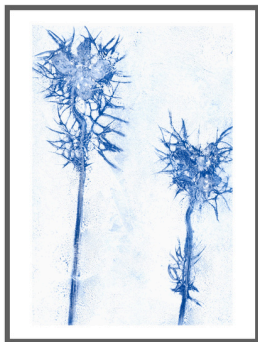
Maple II 'yellow ochre - loganberry'

30x40 cm
21x30 cm



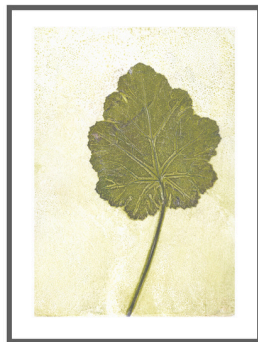
Maple I 'loganberry'

30x40 cm



Love-in-a-mist 'electric blue'

70x100 cm - 12 editions
50x70 cm - 12 editions
30x40 cm - 48 editions
21x30 cm - 48 editions



Geranium 'yellow green'

30x40 cm - 48 editions



Herb garden I 'pea green'

50x70 cm
30x40 cm
21x30 cm



Herb garden II 'pea green'

50x70 cm
30x40 cm
21x30 cm

'Heaven is under our feet' Collection

Limited edition art prints.

Print quality: Giclee print | Paper quality: 310 g Hahnemühle Textured German Etching paper

Only limited to 48 editions in small sizes and 24 in large sizes.

All hand-signed and numbered by the artist.



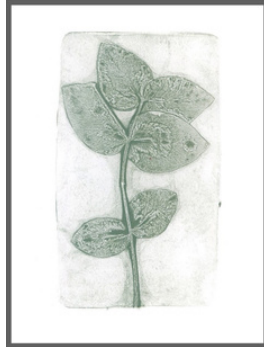
Fern 'grey green'

50x70 cm
30x40 cm
21x30 cm



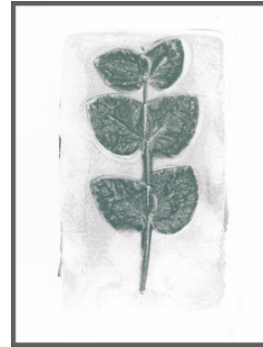
Eucalyptus I 'grey green'

50x70 cm
30x40 cm
21x30 cm



Eucalyptus II 'grey green'

30x40 cm
21x30 cm



Eucalyptus III 'grey green'

30x40 cm



Ranunculus 'grey green'

50x70 cm
30x40 cm
21x30 cm



Pasque flower I 'ginger'

30x40 cm



Pasque flower II 'ochre'

50x70 cm
30x40 cm
21x30 cm



Pasque flower II 'ochre'

50x70 cm
30x40 cm
21x30 cm



Clematis I 'mild terracotta'

50x70 cm
30x40 cm



Clematis II 'mild terracotta'

30x40 cm



Astrantia I 'mild green - loganberry'

30x40 cm



Astrantia II 'yellow ochre - loganberry'

30x40 cm



Hydrangea petals I 'damson purple'

30x40 cm



Hydrangea petals II 'loganberry'

30x40 cm



Anemone 'soft pink'
50x70 cm
30x40 cm
21x30 cm



Snowdrops I 'grey lavender'
50x70 cm
30x40 cm
21x30 cm



Hellebores I 'damson purple'
30x40 cm
21x30 cm



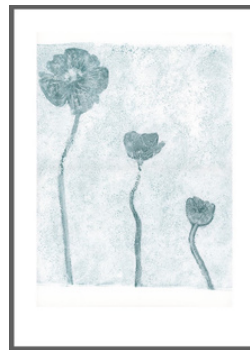
Snowdrops II 'grey lavender'
30x40 cm
21x30 cm



Hellebores II 'damson purple'
30x40 cm



Fritillaria 'indigo'
50x70 cm
30x40 cm



Poppies 'sea green'
30x40 cm

'There are always flowers' Collection

Limited edition art prints.

Print quality: Giclee print | Paper quality: Hahnemühle Textured German Etching paper

Only limited to 48 editions in small size.

All hand-signed and numbered by the artist.



Gloriosa II 'mild green'
30x40 cm



Gloriosa IIN 'scarlet'
30x40 cm



Gloriosa I 'ultramarine'
30x40 cm



Gloriosa round 'scarlet'
30x40 cm



Hydrangea 'mild green'
30x40 cm



Amaryllis 'blue'
30x40 cm



Amaryllis 'bright orange'
30x40 cm



Chamomile 'mixed'
30x40 cm

Xixi

FLORAL & BOTANICAL



BRINGING THE JOY AND
CALM OF NATURE INTO
YOUR HOME





XiXi

FLORAL & BOTANICAL

xixifloralprints@gmail.com

www.xixifloralprints.com